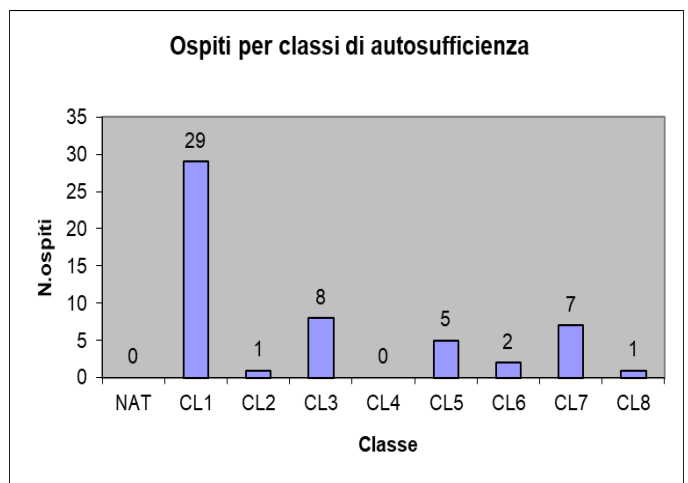
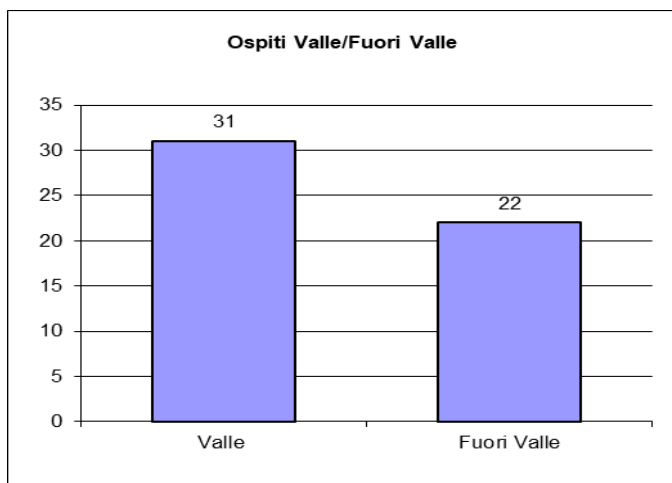
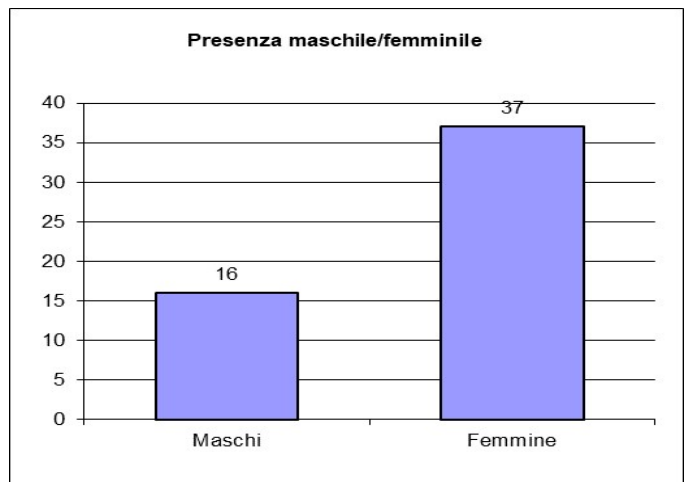
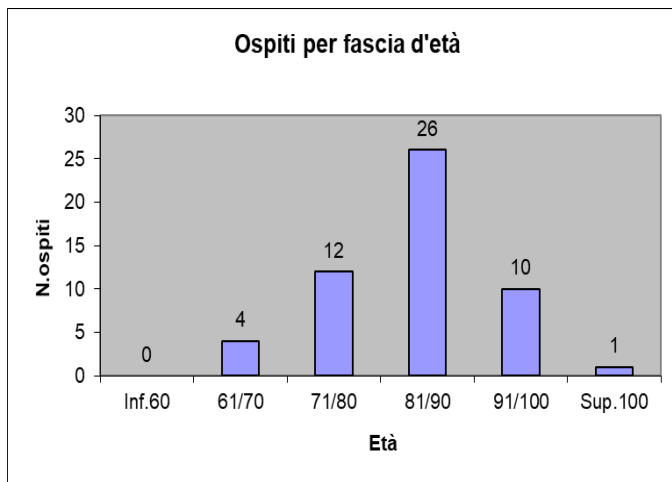




FONDAZIONE

“Bartolomea Spada – Schilpario – Valle di Scalve”
O.N.L.U.S.

Situazione clienti al 31/12/2024



Età media ospiti **83,71**
Età media uomini **79,50**
Età media donne **85,43**

Schilpario **15**
Vilminore di Scalve **7**
Colere **8**
Azzone **1**
Provincia **13**
Fuori provincia **9**



FONDAZIONE

“Bartolomea Spada – Schilpario – Valle di Scalve”
O.N.L.U.S.

Situazione clienti: comparazione 2003-2024

