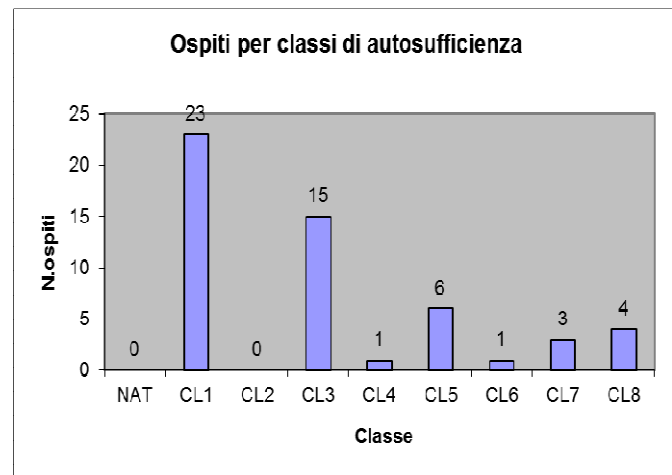
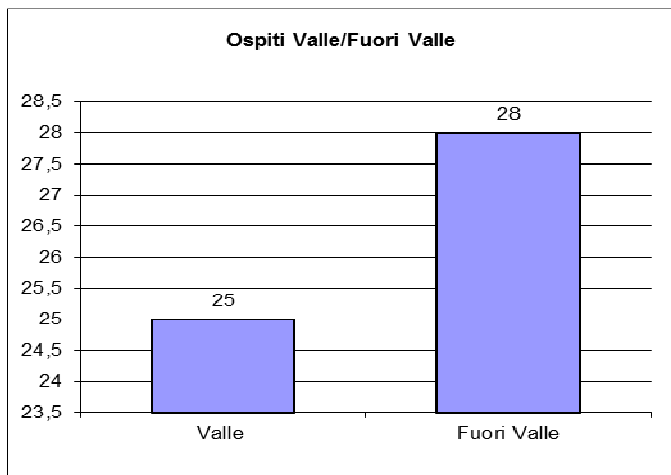
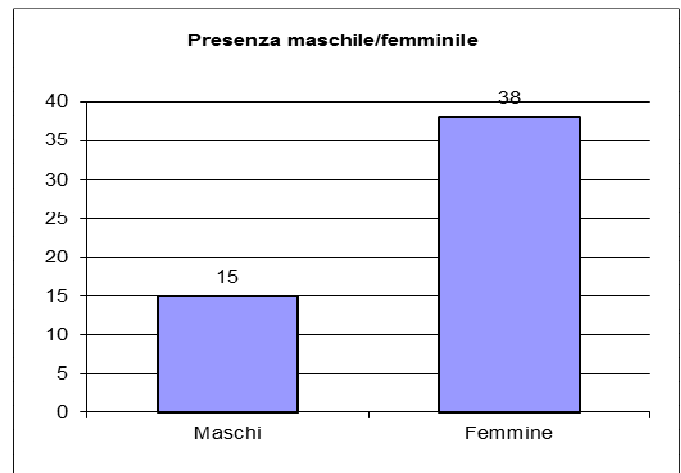
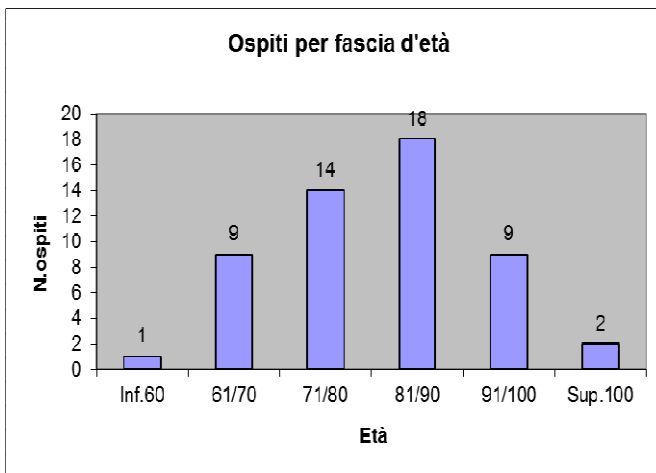




FONDAZIONE

“Bartolomea Spada – Schilpario – Valle di Scalve”
O.N.L.U.S.

Situazione clienti al 31/12/2017



Età media ospiti **81,87**
Età media uomini **76,60**
Età media donne **83,95**

Schilpario **13**
Vilminore di Scalve **4**
Colere **1**
Azzone **5**
Provincia **16**
Fuori provincia **14**



FONDAZIONE

“Bartolomea Spada – Schilpario – Valle di Scalve”
O.N.L.U.S.

Situazione clienti: comparazione 2003-2017

